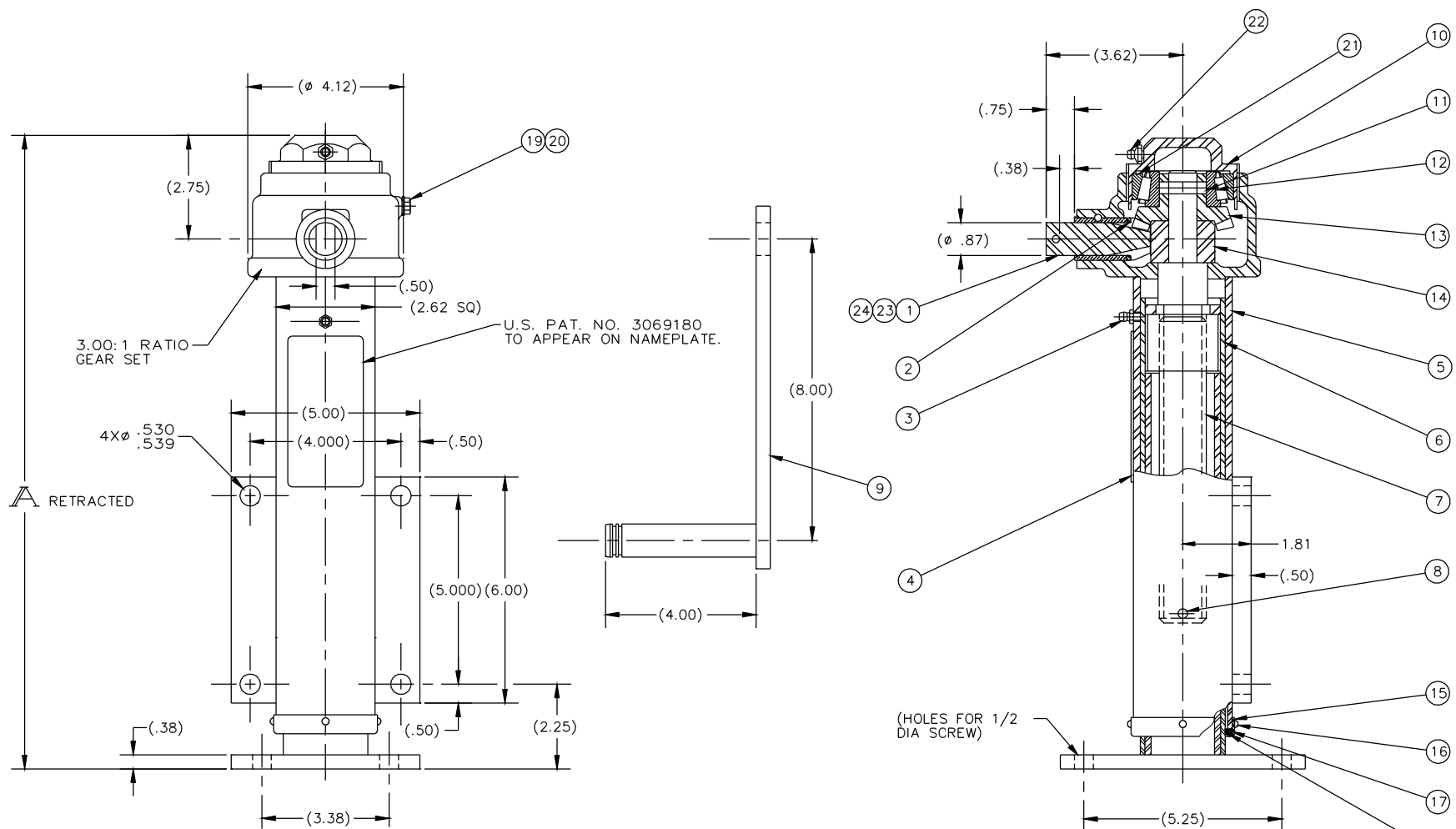


PART NO.	STROKE	RETRACTED	OUTER TUBE ITEM 5	INNER TUBE ITEM 6	SCREW ITEM 7 <sup>(M<sub>7</sub>)</sup>	SIDE LOAD	WT.
31048-3	3	13.62	31603-9	42377-1	14313-27A	1600	31.5
31048-6	6	16.62	31603-18	42377-2	14313-11A	600	35
31048-9	9	19.62	31603-12	42377-12	14313-2A	500	39
31048-12	12	22.62	31603-19	42377-3	14313-12A	450	42
31048-18	18	28.62	31603-20	42377-4	14313-13A	350	49
31048-21	21	31.62	31603-16	42377-8	14313-32A	300	56
31048-24	24	34.62	31603-26	42377-9	14313-17A	250	64

REV.	DESCRIPTION	DATE	BY	APP
F	REDRAWN & PUT ON AUTOCAD	8/9/97	DJH	RCW
G	ADDED 31048-24	7/8/99	DJH	RCW
H	ADDED 31048-9	5/12/00	BJA	RCW
I	NOTE REMOVED	5/9/02	VP	RCW
J	ITEM #8 WAS LL 1/4 X 1-1/2	10/13/04	DDR	RCW
K	K <sub>1</sub> REMOVED MIL-P-16232; K <sub>2</sub> ADDED LUBE 413-23; K <sub>3</sub> ADDED I; K <sub>4</sub> ADDED NOTE	12/2/05	DJH	MRS
L	ADDED JACK DATA	8/21/06	RWN	MRS
M	M <sub>1</sub> - 9832 WAS 9831; M <sub>2</sub> - 8020716 WAS 7552-7; M <sub>3</sub> - 9835 A WAS 9835-A; M <sub>4</sub> - 8020123 WAS 9829; M <sub>5</sub> - 6-32 X 3/16 PH WAS 6-32 X 3/16; M <sub>6</sub> - ADDED PART No. 02420; M <sub>7</sub> - ADDED PART No. 1610-BL; M <sub>8</sub> - ADDED PART No. 9890; M <sub>9</sub> - ADDED PART No. JJ 3/16 SB; M <sub>10</sub> - ADDED "A" TO THE SCREW PART NUMBER;	4/21/11	BGD	DDR



Acorn Industrial Products Co  
 Phone: 800-523-5474  
 Fax: 800-782-6780  
 acorn@acornindprod.com

ITEM #	PART NUMBER	QTY	DESCRIPTION	MATERIAL OR NOTE	SPECIFICATION
(M <sub>9</sub> ) 24	JJ 3/16 SB	1	GRADE 1000 STEEL BALLS		
(M <sub>8</sub> ) 23	9890	1	SPRING		
(M <sub>7</sub> ) 22	1610-BL	1	LUBE FITTING		
(M <sub>6</sub> ) 21	02420	1	CUP		
20	1/4-20 X 3/4	1	SCREW, HEX. HD. CAP	1/4-20 X 3/4 LG	MS35291-6
19	GG 1/4 ML	1	WASHER, LOCK	1/4 MED.	MS35338-25
18	13398	2	RING, SCRAPER		
17	13397	1	SEAL, JACK		
(M <sub>5</sub> ) 16	6-32 X 3/16 PH	4	SCREW, MACH. PAN. HD.	#6-32NC X 3/16 LG	MS35225-25
15	13396	1	RETAINER, SEAL		
(M <sub>4</sub> ) 14	8020123	1	SPACER		Ref. 9829
13	9830-1	1	GEAR, BEVEL		
12	02475	1	CONE, BEARING	TIMKEN OR EQ.	
11	LL 5/16 X 1-1/8	1	PIN, SPRING	Ø5/16 C 1 1/8 LG	MS-9047-264
(M <sub>3</sub> ) 10	9835-A	1	CAP, GEAR HOUSING, ASSY		
9	14168-4	1	HANDLE, CRANK		
(J) 8	LL 1/4 X 1-1/4	1	PIN, GROOVE	Ø1/4 X 1 1/4 LG	MS35674-41
7	SEE CHART	1	SCREW, ACME	1 1/4-4 THD	
6	SEE CHART	1	INNER TUBE ASSY		
5	SEE CHART	1	OUTER TUBE ASSY		
4	14468	1	NAMEPLATE		
3	1641-B	1	FITTING LUBE	(1/4-28 THD)	MS15001-1
(M <sub>2</sub> ) 2	8020716	1	WASHER, THRUST		Ref. 7552-7
(M <sub>1</sub> ) 1	9832	1	GEAR, PINION		

- NOTES:
- (K<sub>4</sub>) 1. FINISH; USE SPECIFICATIONS BELOW UNLESS OTHERWISE INDICATED ON SALES ORDER.
    - (K<sub>1</sub>) 1.1. PHOS COAT PER TT-C-490. TYPE I OR III.
    - 1.2. PRIMER: 1-COAT PER TT-P-636 (RED OXIDE).
    - (K<sub>4</sub>) 1.3. ENAMEL: ONLY WHEN SPECIFIED ON ORDER
    - (K<sub>4</sub>) 1.4. PRIME AND PAINT UNIT IN RETRACTED POSITION, THEN EXTEND UNIT AND SPRAY CONTACT PORTION OF INNER TUBE WITH LUBRIBOND 220.
  - (K<sub>2</sub>) 2. LUBRICATION: GREASE PER CIGNYS LUBE SPEC. DOC. 413-23. PACK BEARINGS AND COAT SCREW & NUT.
  - (K<sub>3</sub>) 3. PLATING: ALL EXTERIOR HARDWARE ITEMS ZINC PLATE PER ASTM B-633-85-CLASS FE/ZN 5 (.0002 IN THICK), TYPE III (CLEAR).

- (L) JACK DATA:
1. 12 REVS. INPUT FOR 1 INCH OF STROKE
  2. 15,000 LB MAXIMUM STATIC COMPRESSION TO YIELD
  3. APPROX. 235 INCH LB. TORQUE INPUT AT MAXIMUM OPERATING LOAD

D-07-044636-6Ø	CASTER
D-07-044570-6Ø	CASTER
D-07-044435-10Ø	CASTER
D-07-042980-10Ø	CASTER
D-07-042999-10Ø	CASTER
D-07-042795-6Ø	CASTER
D-07-042577-8Ø	CASTER
D-07-042521-6Ø	CASTER
D-07-042390-8Ø	CASTER

44435	44435
40790	40790
NEXT ASSEMBLY	USED ON:
THIS DRAWING AND THE SUBJECT MATTER ILLUSTRATED IS THE PROPERTY OF CIGNYS. THE DRAWING IS NOT TO BE COPIED IN PART OR WHOLE, DUPLICATED, REPRODUCED, USED BY PARTIES OTHER THAN CIGNYS TO MANUFACTURE THE SUBJECT MATTER ILLUSTRATED, OR SUBMITTED TO OTHER PARTIES WITHOUT THE EXPRESS WRITTEN AUTHORIZATION OF CIGNYS.	

MATERIAL:	SEE DETAILS	DRAWN BY: GMS	CHECKED BY: DJH
FINISH:		ENGINEERING APPROVAL: MRS	DATE DRAWN: 1/20/72
		CUSTOMER:	
DIMENSIONS ARE IN INCHES UNLESS OTHERWISE SPECIFIED			
TOLERANCES UNLESS OTHERWISE SPECIFIED			
MACHINING & STAMPING OPERATIONS	WELDMENTS & SHEET METAL FABRICATIONS		
FRACTION DECIMALS ANGULAR	FRACTION DECIMALS ANGULAR		
1/16 ± .03 XX ± .01 XXX ± .005	1/8 ± .06 XX ± .06 XXX ± .03		
SCALE: 1/2"	DO NOT SCALE DRAWING	SHEET: 1 of 1	